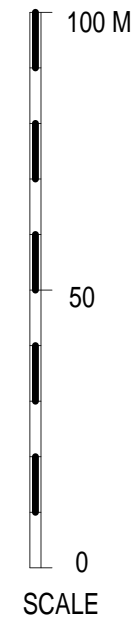


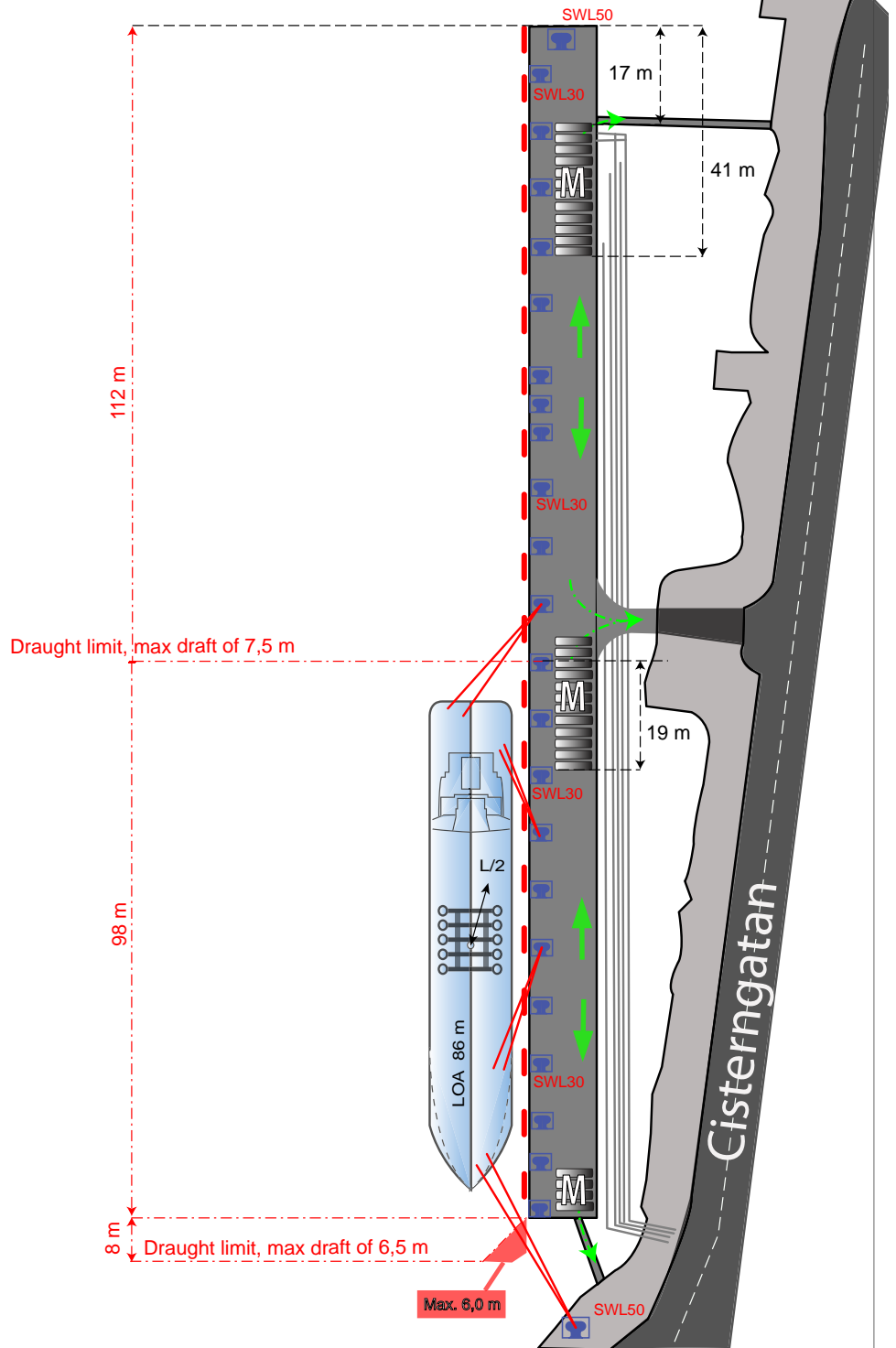
BERTH 506

MAX DRAUGHT:	6,0 - 6,5 M	MAX MANIFOLD HEIGHT ABV SEA LEVEL:	N/A
MAX LOA:	86 M	MAX VRU HEIGHT ABV SEA LEVEL:	N/A
MAX BREADTH:	N/A	QUAY DECK HEIGHT:	2,2 M
UKC:	0,5 M	MAX DIST. STERN TO CoM:	N/A
MIN PARALLELL BODY:	N/A	MAX DISPLACEMENT:	N/A
MIN FREEBOARD (MW):	N/A	MAX SPEED:	N/A

Vessel with LOA >120 m one mooring line at each bollard only.

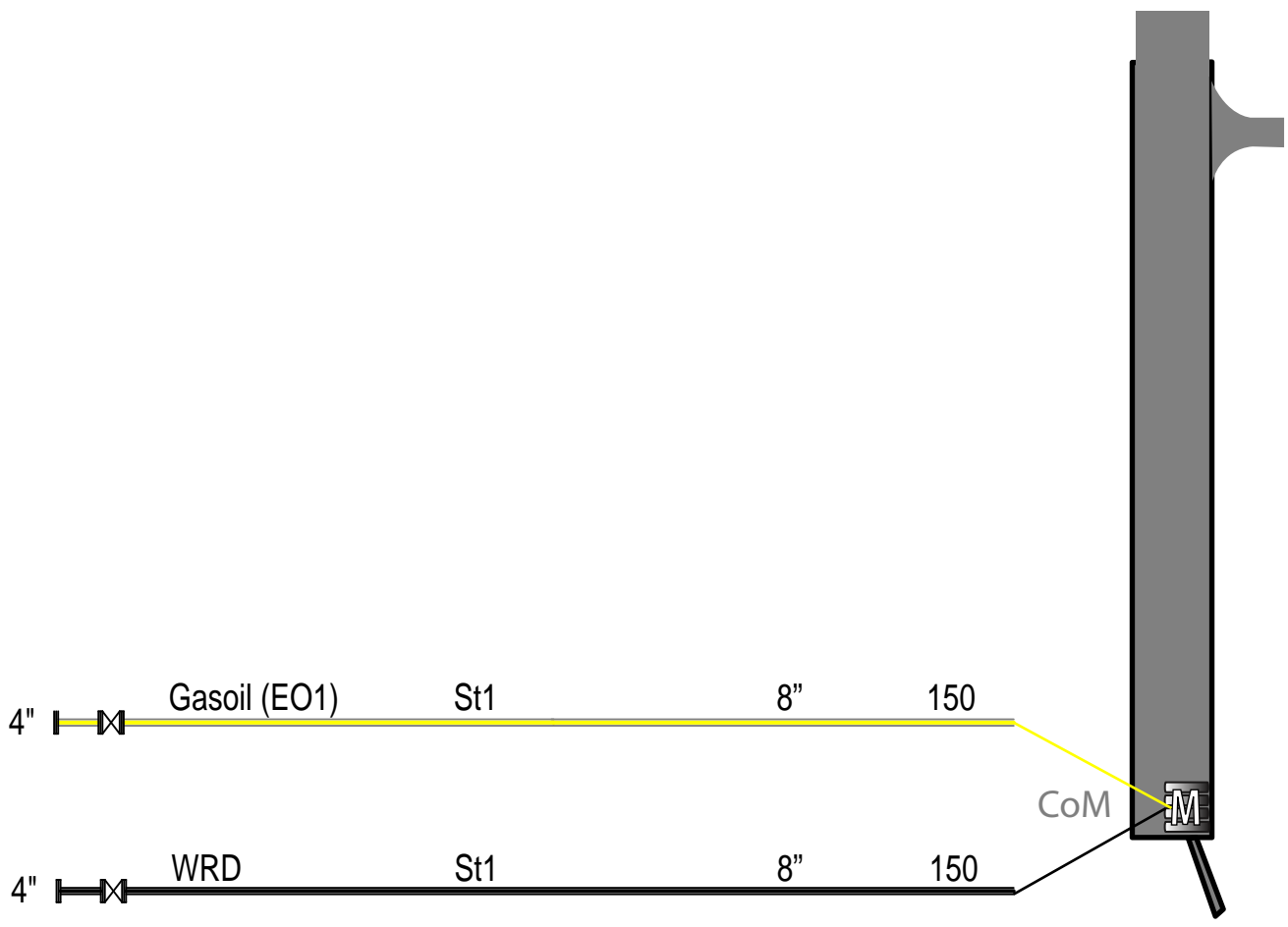


- MANIFOLD
 - DOLPHIN
 - FENDER
 - HOOK (h)
 - BOLLARD
 - EMERGENCY EXIT
 - CoM CENTER of MANIFOLD
- } SWL = Safe Working Load in tons



	 N	BERTH DIRECTION 041° / 221°	MOORING PLAN SKARVIK BERTH 506			BERTH / DRAWING NO BERTH506	APPROVED BY CL
		REV. DATE / DATE 2018-05-11	DRAWN MAFLOBE	SCALE 			

HARD ARM No.	SIZE OF CONN.	PRODUCT	COMPANY	MAX PRESSURE BAR	MAX LOADING/DISCHARGING CAPACITY M3/H
--------------	---------------	---------	---------	------------------	---------------------------------------



- ① = Hard arm No.
- = Hard arm symbol
- = Hose symbol

	 N	BERTH DIRECTION 041° / 221°	MANIFOLD ARRANGEMENT SKARVIK BERTH 506			
			DATE 2018-05-11	DRAWN MAFLOBE	SCALE /	BERTH / DRAWING NO BERTH506